

STAINLESS STEEL
POWDER COATING
AIR CHAMBER
HINGEING

HIGH WATER AREA



SOCKET 1 MODULAR HW

- Socket manufactured in 304 stainless steel.
- External dimensions l x b x d = 515 x 230 x 405 mm.
- The hinged cover with its square lock is manufactured in matt blasted stainless steel chequer plate.
- The air chamber is located below the cover and hinges with it.
- The air chamber can be provided with a CEE socket as required (see list of models).
- In order to ensure that the air chamber is airtight each connector is provided with a neoprene sleeve covering the transition to the ground cable. The maximal length of the ground cable is 3 metres.
- The cabinet is provided with stabilising profiles at the base.
- The junction panel is powder coated throughout and all areas visible from above when the cover is closed are finished in glass bead blasted stainless steel.
- The maximal load on the covers is 125kN in accordance with EN124 B125.
- Opening the cover of this model brings the air chamber above ground level, after which it tilts into the operational position. Closing the cover reverses this sequence. This ensures that the air bubble is formed when the equipment goes below ground level.



WWW.BENEDPUT.BE

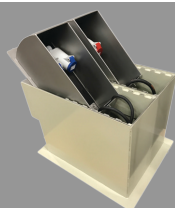
ABOUT US

At BeNed BVBA we develop and manufacture technical street furniture for public spaces. Our underground BeNedkast housing can be used for a variety of purposes such as control equipment and electrical and water supplies. We also provide custom work.

OUR PRODUCTS



SOCKET
1 MODULAR



SOCKET
2 MODULAR



SOCKET
HIGH WATER AREA